

XD-08 Electric spark surfacing repair machine



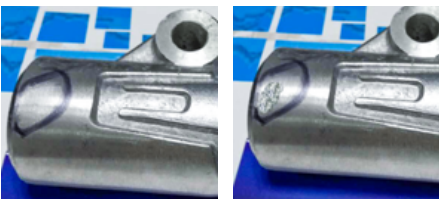
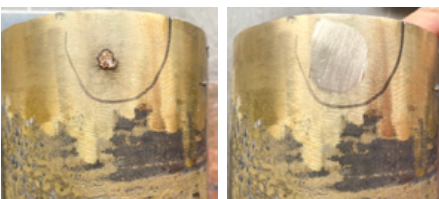
Casting defect repair

High repair accuracy, very small color difference between solder joints and base metal after welding, long standby time



Mold surface coating

Suitable for impact resistant mold or high temperature resistant surface, increase wear resistance.



Product advantages

- ✓ Welding repair for copper, iron and aluminum steel surface holes, sand holes, lack of flesh and other metal defects, as well as copper mold, aluminum mold.
- ✓ The large current circuit and the signal control circuit are fully isolated, which increases the stability of the machine;
- ✓ Can increase the heat resistance, impact resistance and wear resistance of the surface of the coated workpiece, prolong the service life;
- ✓ The thickness the coating can be adjusted arbitrarily, The standard thickness is 0.01-0.1mm;

Power supply	220V
Input power	1800W
Output Voltage	50-100V
Discharging percentage	10-100%
Core diameter	1.2-3.6mm
Protection grade	IP40
Weight	23kg
Machine size	436*260*308mm