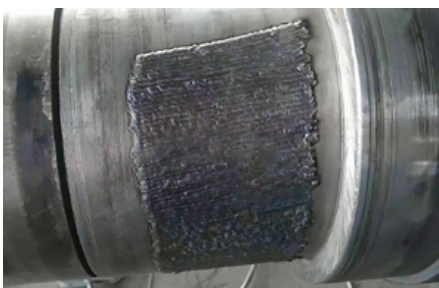
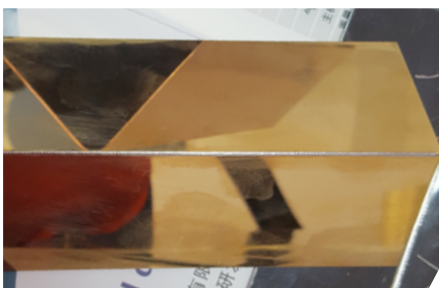
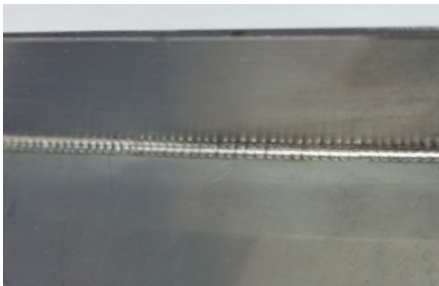
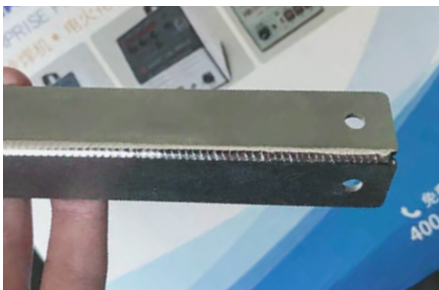


XD-1600 Multi-functional cold welding machine



Product advantages

- ✓ Functions: precision spot welding, automatic continuous pulse spot welding, welding wire parameter preset, argon arc welding function.
- ✓ Fast welding speed , the fastest welding speed can be 400mm/min, which is more than several times of the common welding machine in the market
- ✓ Machine net weight 9KG, easy to carry.
- ✓ The substrate has minimal damage, minimal thermal impact, no annealing deformation, and minimal damage.
- ✓ XD-1600 multifunctional cold welding machine is a new type of metal repair welding machine independently developed by our company with a single power supply current.suitable for welding steel,iron,copper,aluminum and other metal parts.

Power supply	220V±20% -50HZ
Power Consumption	10-1200w
Cold welding output	spot welding/continuous welding
Machinie size	415*200*245mm
Weight	9kg
Welding wire size range	0.3-1.6mm
Thickness of cold welded plate	0.3-3.0mm
Thickness of argon arc plate	0.5-5.0mm
Maximum instantaneous power output	>40kw